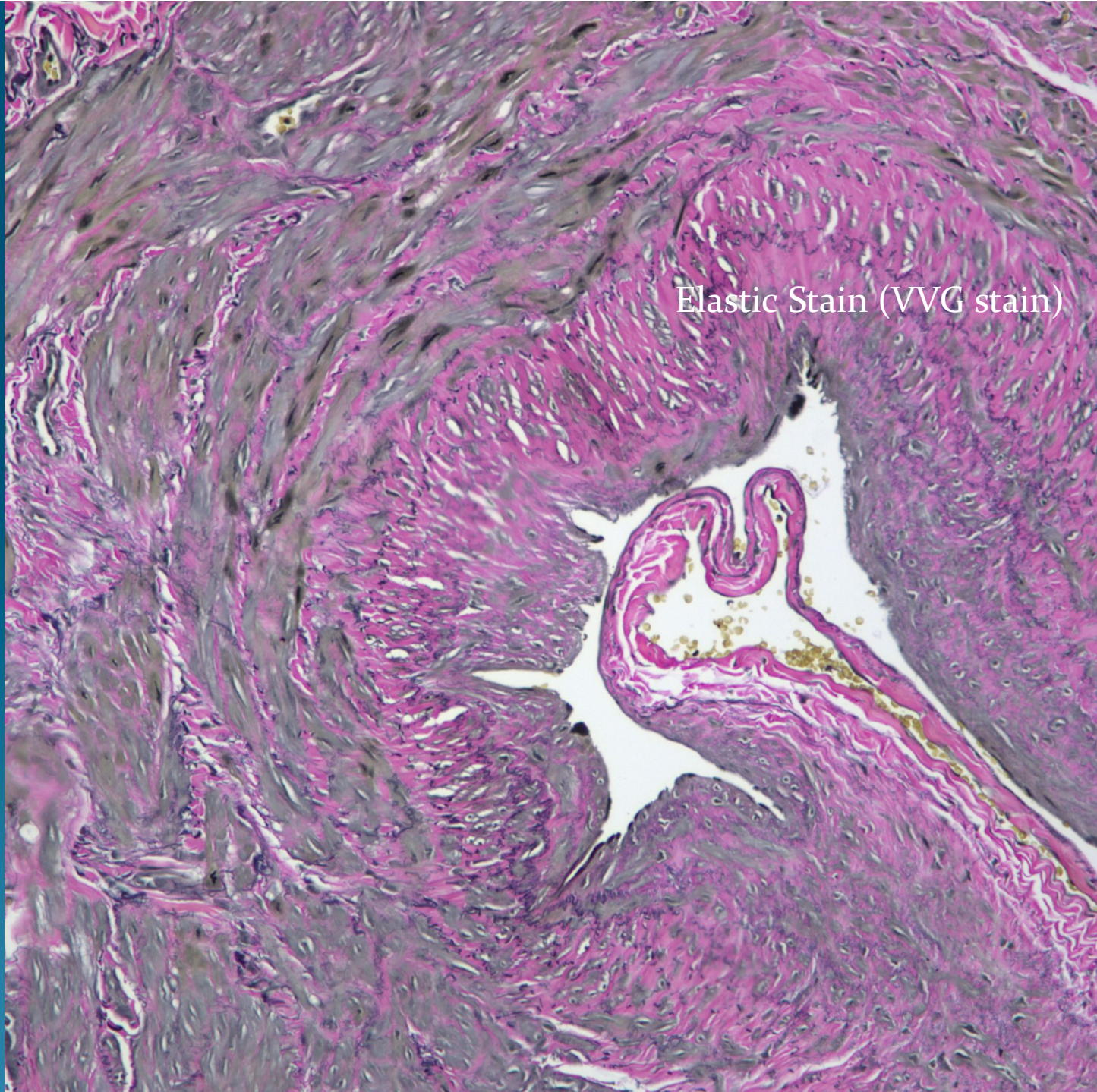


Elastic Stain (VVG stain)



Is this an artery or a vein?

Varicose vein with arterialization
changes

Notes

- Veins in the lower extremities may exhibit arterialization changes due to increased hydrostatic pressure
- An elastic stain may show an internal elastic lamina, similar to an artery, in these veins
- The key is to identify scattered elastic fibers distributed through the muscular layers in the veins, a feature lacking in arteries.
- Am J Dermatopathol. 2010 Oct;32(7):688-93.
Chen KR.
The misdiagnosis of superficial thrombophlebitis as cutaneous polyarteritis nodosa: features of the internal elastic lamina and the compact concentric muscular layer as diagnostic pitfalls.

Arterialization Pattern in Lower Extremity Veins

Elastic
Stain with
Scattered
Elastic
Fibers in
Muscular
Layers of
veins

Internal
Elastic
Lamina

